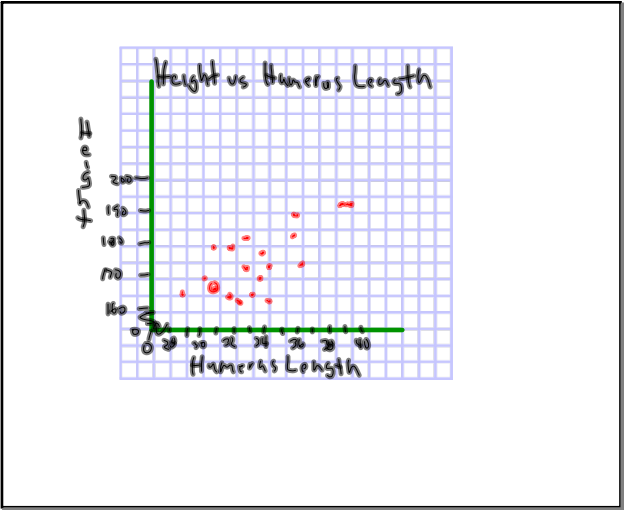


Scatter Plots		
Student #	Height (cm)	Humerus Length (cm)
1	178	32
2	164	29
3	165	31
4	168	30.5
5	165	31
6	181	33
7	171	33
8	178	31
9	188	36
10	166	34
11	191	39
12	173	36.5
13	164	33.5
14	172	34.5
15	182	39.5
16	163	32
17	160.5	33
18	160.5	34.5
19	168	34
20	181	36

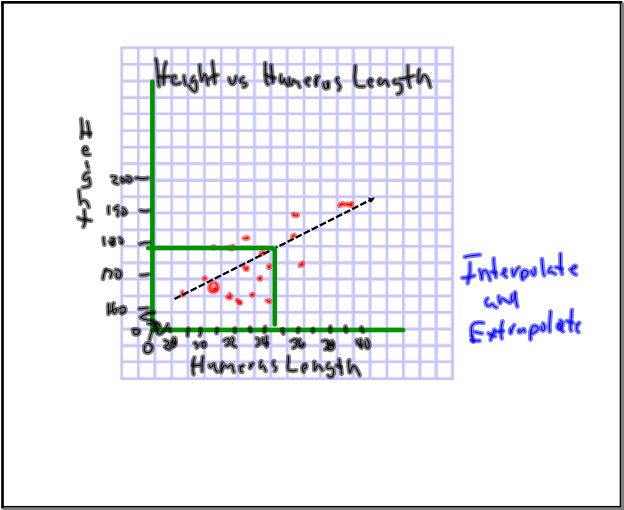
Apr 9-1:30 PM

Scatter Plots		
Student #	Height (cm)	Humerus Length (cm)
21	181	37.5
22	166	35.5
23	171	35.5
24	161	33.5
25		
26		
27		
28		
29		
30		

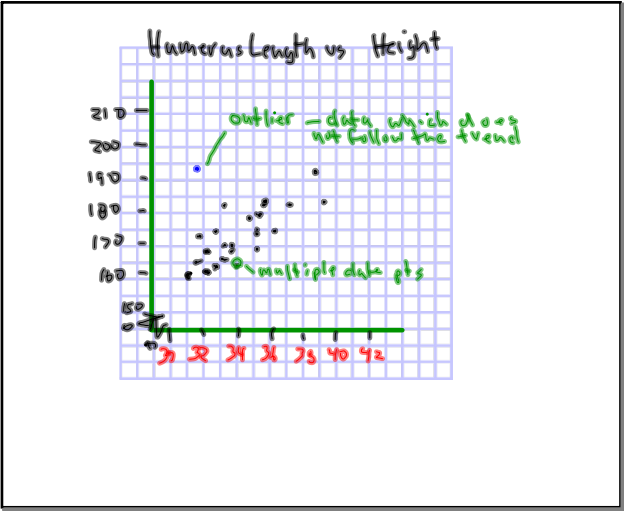
Apr 9-1:30 PM



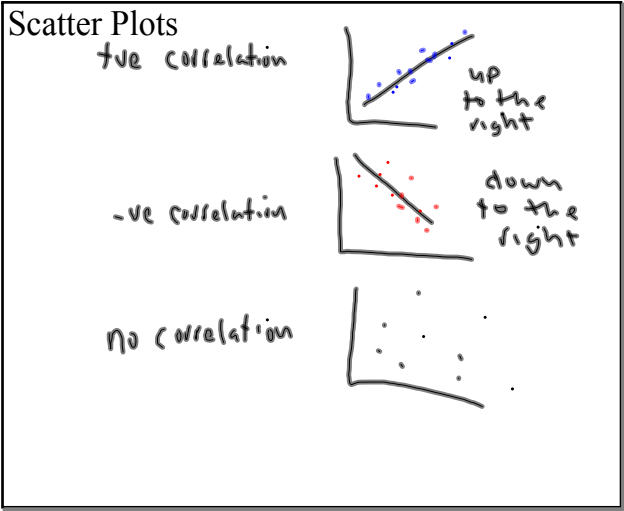
Apr 13-1:02 PM



Apr 13-1:02 PM



Apr 13-1:02 PM

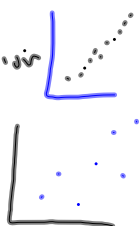


Apr 13-1:22 PM

Scatter Plots- try to show if there is a pattern between two variables

This pattern can be measured using a correlation value

-1 or $+1$ = Strongest correlation
 0.3 or -0.3 = weak correlation



Apr 13-1:27 PM

The Line of Best Fit

To create;

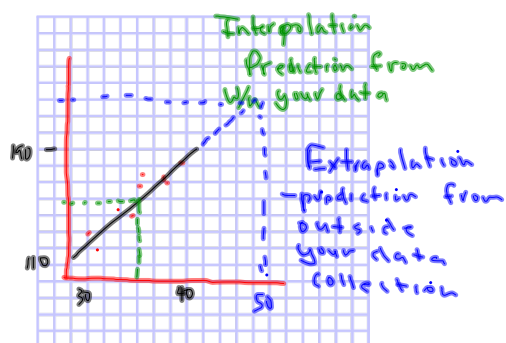
Line must describe data

Same number of pts above and below the line

Pts are relatively equidistant from the line of best fit

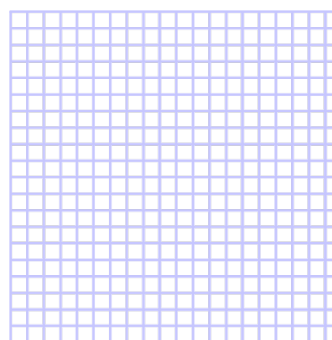
Create line of Best fit in order to
Interpolate and Extrapolate data off the scatterplot

Apr 13-1:39 PM



p69-70 q 1-5, 8 cd 10,11

Apr 13-1:02 PM



Apr 13-1:02 PM